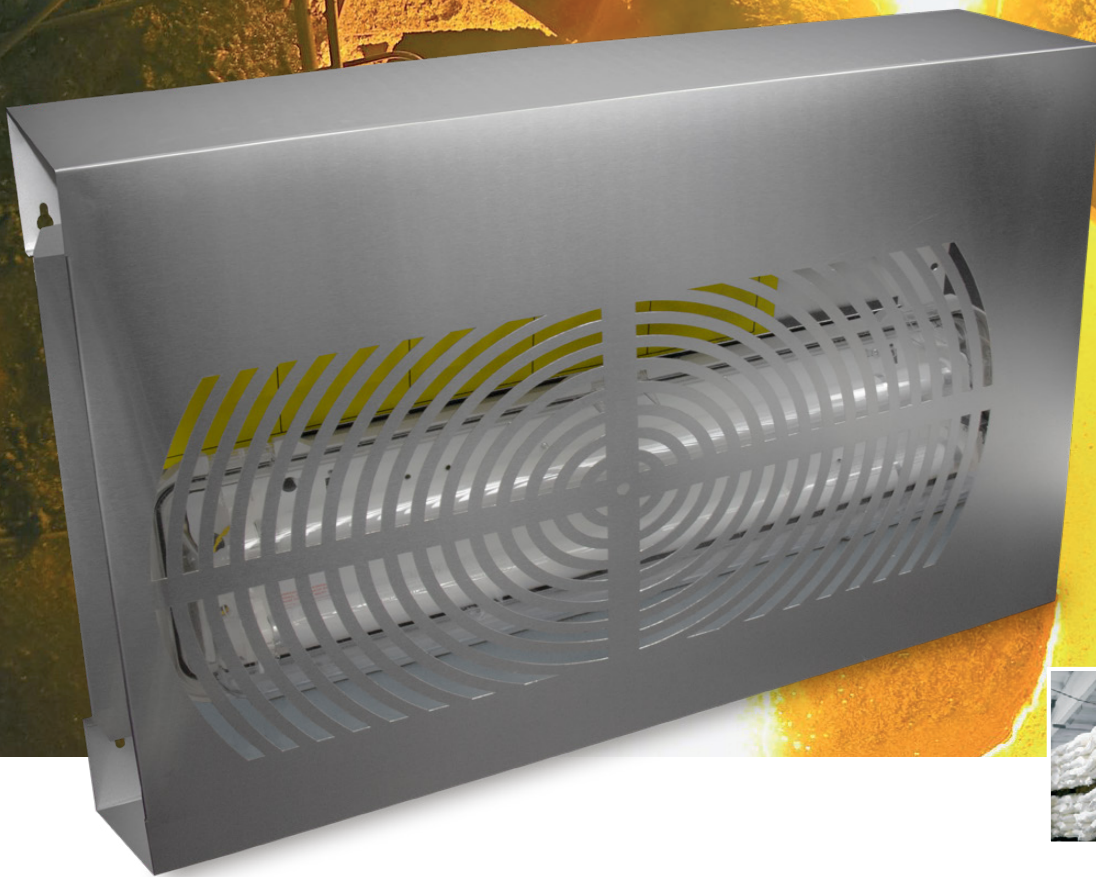
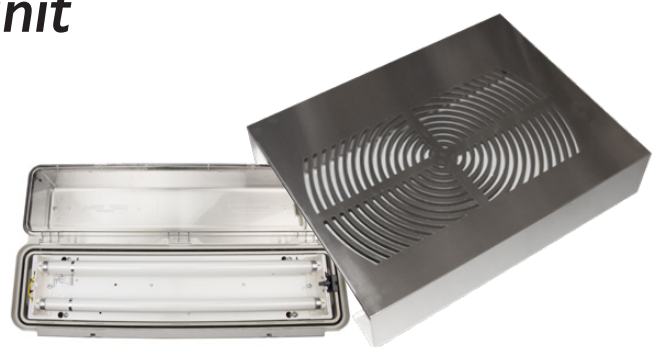


# I-TRAP 150EX II

[www.insect-trap.net](http://www.insect-trap.net)



***The ATEX 95 Rated 150 m<sup>2</sup>  
wall mounted insect control unit***



[www.insect-trap.net](http://www.insect-trap.net)

# I-TRAP 150EX II

## i-trap 150EX II wall mounting system.

With its robust design, the i-trap 150EX II is recommended for use in areas with a potential danger of a gas explosion or a dust explosion. The unit can be wall mounted. The i-trap 150EX II has a specially designed front grid which optimizes the attraction potential.

This grid is made of stainless steel. Once the insects enter the I-trap, they are effectively controlled by a centrally placed glue board.

*Easy to service, robust and effective;  
the i-trap 150EX II offers it all.*

## 10 reasons to start using the i-trap 150EX II:

1. Functional and industrial design.
2. Two powerful UV-A lamps and an effective glue board ensure fast and discreet attraction of all flying insects. Exclusive to A the Philips Longlife UV-A lamp offers 2 years of effective use. The Philips Longlife lamp is specifically designed to match the fly's vision spectrum with the lamp's output, for optimum attracting power.
3. 30% improved performance over conventional units due to its unique attraction grid, which reflects the light onto the landing spot thereby stimulating the landing behaviour of flying insects.
4. Durable quality material, unit standard executed in a hose proof (IP68) execution.
5. Effective coverage up to 150 m<sup>2</sup> of area against flying insects.
6. Fast and simple maintenance and service of the unit.
7. Top quality acc ISO 9001 production, 2 year "return to base" guarantee.
8. Wall mounting unit, in full stainless steel casing.
9. Certified for use in gas & dust explosion proof ATEX environments.
10. High frequency ballast technology offers low operational costs and makes the use of starters redundant. The electronic ballast also offers a high frequency light pulse which means the insect cannot distinguish the lamp from natural UV-A light so providing greater attraction.



## Technical specifications

Area coverage	: 100 - 150 m <sup>2</sup> effective coverage
Light sources	: 2x 18 Watt shatterproof Philips Longlife lamps
Type of UV lamps	: UV-A Lamp RoHS certified
Electrical supply	: 120-254 V ~ 50-60 Hz
Catch specifications	: By means of effective glue board
Power consumption	: 45 Watt
Weight	: 8 Kg
Material	: 0,8 mm SS 304 (Brushed steel)
Degree of protection	: IP 68 (hose proof)
Guarantee	: 2 year return to base
Lamp life time	: 17,500 hrs
Dimensions (LxHxD)	: 565 x 770 x 165 mm
CE-approval	: Yes
Mounting position	: Wall mounted
Cable & plug	: Not included in scope of supply
Packaging	: Strong cardboard box
Manual	: Enclosed with the unit in English language
Coding	: Ex II 2 GD Ex e mb q IIC T4 T_amb 55°C
Certificate number	: EC Type Examination Certificate Baseefa 04 ATEX 0220
Zone classification	: Zone 1 and 21 areas to EN60079-10-1 & EN60079-10-2 installation EN60079-14
ATEX classification	: Group II Category 2 GD

(\* ) After 17,500 hours of use, the Longlife lamp still offers 75% of its initial UV-A output value

